



## Table of contents

1	Safety .....	3
1.1	Personal .....	3
1.2	Symbols and warning notes .....	3
1.3	Stipulated usage .....	4
1.4	Power supply .....	4
1.5	Clipping blades .....	5
1.6	Children .....	5
1.7	Burns, fire, electric shocks or injuries to people .....	6
2	Generalities .....	7
2.1	Guarantee conditions .....	7
2.2	Customer service .....	7
2.3	Limitation of liability .....	7
3	Technical data .....	8
3.1	General information .....	8
3.2	Mains voltage .....	8
3.3	Operating conditions .....	8
4	Assembly and function .....	8
4.1	Scope of delivery .....	8
4.2	Overview .....	9
4.3	Abstract .....	9
4.4	Control and display elements .....	9
4.5	Instructions for charging the battery .....	10
5	Transport, packaging and storage .....	10
6	Operation .....	11
6.1	Initial start-up .....	11
6.1.1	Requirements for the charging location .....	11
6.1.2	Attaching the clipping blade .....	11
6.1.3	Setting the adjustment lever .....	11
6.2	Activities during operation .....	12
6.2.1	Changing the clipping blade .....	12
6.2.2	Lubrication .....	12
6.2.3	Cleaning .....	13
7	Troubleshooting .....	13
8	Spare parts .....	14
9	Disposal .....	14



## IMPORTANT SAFETY INSTRUCTIONS



### NOTE!

When using an electrical device, you must always observe basic precautionary measures as described below:

Read all instructions before using the device.

## 1 Safety

The non-observance of the instructions and safety regulations mentioned in this manual can cause operating malfunctions or serious injury to persons.

### 1.1 Personal

- Children are not permitted to operate the equipment.

Operation of the clipper is only permitted by personal expected to do their work reliably. Persons, whose reactivity is affected by drugs, alcohol or pharmaceuticals, are not permitted to operate the equipment.

### 1.2 Symbols and warning notes

Various symbols are used in the operating instructions. These symbols indicate possible hazards or bring to the user's attention such technical information that, if not complied with, may lead to personal injury and material damage or to uneconomic operation.

#### Hazard symbols



#### WARNING/DANGER!

Denotes a possibly hazardous situation. Serious injury and even death can result if such situations are not avoided.



#### CAUTION!

Denotes a possibly hazardous situation. Light or slight injury can result if such situations are not avoided.

#### Information symbols



#### NOTE!

A note which, if not complied with, can lead to operational stoppages or damage.

### 1.3 Stipulated usage

The equipment is exclusively designed and conceived for the here described use and intention.

This device is solely intended for use to cut human head hair. The device is intended for commercial use.

The compliance of all indications in this manual is part of the intended use. Other uses are expressly prohibited.

The device may only be operated with the power supply unit provided.

### 1.4 Power supply



#### **DANGER!**

In order to reduce the risk of electric shock:

- ▶ Do not touch the device if it falls into water. Immediately pull the plug out of the socket.
- ▶ Do not use when bathing or in the shower.
- ▶ Do not place or store the device in such a way that it can fall or be pulled into a tub or washbasin. Do not place the device in water or other liquids and do not allow it to fall in.
- ▶ Always unplug the device from the wall socket immediately after use, except when charging.
- ▶ Unplug the device from the mains before cleaning it.



#### **WARNING!**

In order to reduce the risk of burns, fire, electric shock or injuries to people:

- ▶ A device must never be left unattended when it is plugged in.
- ▶ This device is not intended to be used by persons (including children) with reduced physical, sensory or mental capabilities, or lack of experience and knowledge, unless they are supervised by a person responsible for their safety or have been given instructions by that person on how to use the device. Children should be supervised to ensure that they do not play with the device.
- ▶ Only use the device for the purpose described in these instructions. Do not use any mounting components that are not specified by the manufacturer.
- ▶ Never use the device if the cable or plug is damaged or if it does not work properly after falling, sustaining damage or landing in water. Take the device to a service centre for inspection and repair.
- ▶ Keep the cable away from heated surfaces.
- ▶ Keep the air openings free of lint, hair, and similar objects.

- ▶ Never drop or insert objects into an opening.
- ▶ Do not use the device outdoors and do not operate it while aerosol products (sprays) are being used.
- ▶ Do not use this device with a damaged or broken comb as this may cause injury to the face.
- ▶ First insert the plug into the device before plugging it into the outlet. To disconnect, turn all controls to off position (e.g. "0") then remove plug from outlet.
- ▶ Plug charger directly into outlet, do not use an extension cord.



**WARNING!**

Keep the device dry.

## 1.5 Clipping blades



**WARNING!**

Moving blades and sharp edges of the blades can cause injuries on the skin. Therefore:

- ▶ Work carefully.
- ▶ Avoid any contact with the moving blades.
- ▶ The shearing blades may become hot after prolonged use.

## 1.6 Children



**WARNING!**

Never let the equipment unsupervised and use it very carefully when children or persons who cannot judge the dangers are nearby.

Children are not permitted to operate the equipment.

Children should be supervised to ensure that they do not play with the device.

## 1.7 Burns, fire, electric shocks or injuries to people



### **WARNING!**

In order to reduce the risk of burns, fire, electric shocks or injuries to people:

- ▶ Do not leave the device unattended at any time when it is connected to the mains (or if the device is used with a detachable power supply).
- ▶ Do not use the device outdoors or in conjunction with the use of aerosol (spray) products.
- ▶ Do not use this device if the comb is damaged or broken, as this can lead to injuries.



**KEEP THESE INSTRUCTIONS IN A SAFE PLACE!**

## **2 Generalities**

This manual facilitates a safe and efficient machine handling. Read these instructions carefully before starting operation.

Basic requirements for a safe operation are the adherence of all the information regarding safety and operation in this manual.

Keep this manual permanently. If you hand on the equipment to other persons, provide them with this manual.

### **2.1 Guarantee conditions**

The guarantee conditions are included in the general terms and conditions of the manufacturer.

### **2.2 Customer service**

For technical information, our customer service and our authorised service centres are at your disposal.

Furthermore, our staff is interested in new information and experience resulting from the operation which could be useful for the improvement of our products.

### **2.3 Limitation of liability**

All data and information in this instruction manual were arranged in consideration of the current standards and regulations and state of the art as well as our realizations and experiences of many years.

The manufacturer assumes no liability for disadvantages due to:

- Non-observance of the instruction manual.
- Operation of the clipper for not intended use.
- Assignment of not instructed personal.
- Technical modifications.
- Use of not approved spare parts.

The actual scope of delivery can differ from specially designed models, from additional ordering options or due to the latest state of the art from the here described annotations and illustrations.

This product has been developed and assembled using the best individual components available. It is designed to give longevity and high performance. If spare parts are used during the life of this product, please ensure that they are genuine Heiniger parts. Failure to use genuine Heiniger spares may reduce the performance of this precision engineered product and will void any warranty claim.

## 3 Technical data

### 3.1 General information

Hair clippers	Length	180 mm
	Width	54 mm
	Height	39 mm
	Weight with battery	268 g
Battery	Running time at 20 °C	>90 min, max. 210 min

### 3.2 Mains voltage

Electrical	Voltage	100–240 V, 50 / 60 Hz
------------	---------	-----------------------

### 3.3 Operating conditions

Environment	Temperature range	0–40 °C
	Maximum relative humidity	75%
	Vibration $a_{hv}$	< 1.82 m/s <sup>2</sup>
	Noise emission ( $L_{pAm}$ )	< 59 dB

## 4 Assembly and function

### 4.1 Scope of delivery

Hair clippers	1 pc.
Clipping blade (depending on equipment)	1 pc.
Oil dispenser	1 pc.
Cleaning brush	1 pc.
Operating instructions	1 pc.
Packaging for transport and storage	1 pc.
Wall plug transformer with plug adapter	1 pc.
Blade guard	1 pc.
Comb attachment set	1 pc.



## 4.2 Overview

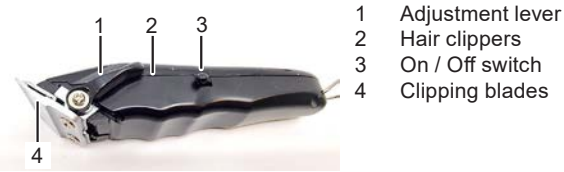


Fig. 1

## 4.3 Abstract

These clippers are used to cut human head hair. Two comb-shaped blades are the cutting tool. The lower blade facing the skin can be moved and is attached to the blade carriage. The top blade is agitated crossways that one. The top blade is set in motion with the help of an adjustment lever.

## 4.4 Control and display elements

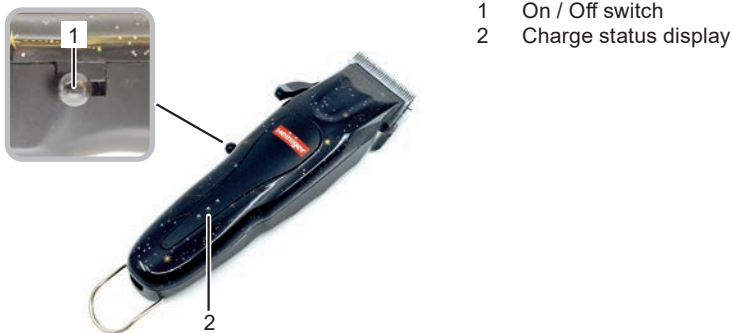
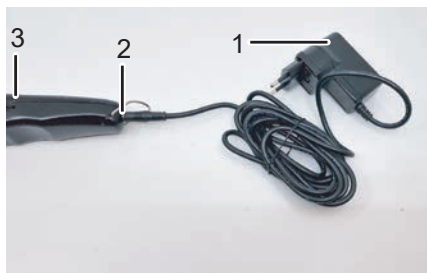


Fig. 2 Control and display elements

### Charge status display

Charge status, not connected to the mains	LEDs
Battery is fully charged	3 LEDs light up blue
Battery is running low	2 LEDs light up blue
Battery is dead	1 LED lights up blue, charging required

## 4.5 Instructions for charging the battery



- 1 Power supply unit
- 2 Connection socket
- 3 On / Off switch

Fig. 3 Charge the battery

Charge the device as follows before first use:

- ▶ Plug the cable into the connection socket (2) of the device.
- ▶ Make sure the device's on/off switch (3) is turned off.
- ▶ Plug the power supply unit (1) into a socket.

When the device is fully charged, the three LEDs of the charge status indicator light up blue (see also "Charge status display").



### NOTE!

Only use the original power supply included.

No guarantee can be given in the event of damage due to non-use of the original power supply.

## 5 Transport, packaging and storage

Check the delivery on receipt immediately on completeness and damage in transit.



### NOTE!

Complain any damage as soon as you discover it. Claims for damages only may be made within the valid time.

For the packaging, just non-polluting material is being used.

The packaging is to protect the individual components from transport damage, corrosion and other forms of damage prior to use.

### Store the clipper and accessories as follows:

- ▶ Always store in the packaging supplied with it.
- ▶ Do not store outdoor.
- ▶ Store dry and dust-free.
- ▶ Protect against solar irradiation.
- ▶ Avoid mechanical shocks.
- ▶ Storage temperature: 0 until 40°C.
- ▶ Relative humidity: max. 75%. When storing longer than 3 months, check periodically the general condition of all parts. If necessary, refresh or renew the conservation.

## 6 Operation



### WARNING!

Incorrect operation may cause damage on persons or objects. Therefore:

- Do all the steps of operation according to the indications in this instruction manual.

### 6.1 Initial start-up

#### 6.1.1 Requirements for the charging location

- Observe all technical data according to the operating conditions (3 Technical data).
- Power outlets in the outer area must be equipped with a residual current circuit breaker (FI).
- The workplace must dispose of sufficient illumination and ventilation.
- The charging location must be out of the reach of children.

The LEDs light up blue during the charging process. Once the charging process is complete, the LEDs light up blue continuously. The device is ready for operation.

#### 6.1.2 Attaching the clipping blade

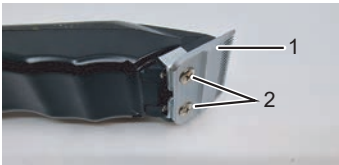


Fig. 4

1. Align the lower blade with the upper blade.
2. Tighten both screws (2).



### NOTE!

To ensure proper operation, make sure that the clipping blades (1) are correctly fitted and the blades are aligned.

#### 6.1.3 Setting the adjustment lever

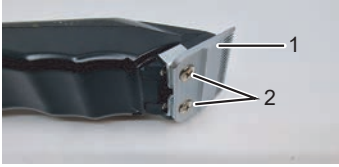


Fig. 5

- ▶ Set the adjustment lever (1) according to the desired cutting height as follows:
  - Adjustment lever up - minimum cutting length
  - Adjustment lever downwards - maximum cutting length

## 6.2 Activities during operation

### 6.2.1 Changing the clipping blade



1. Slide the on/off switch (Fig. 2/1) to position "0".
2. Unscrew both screws (2).
3. Remove the clipping blade (1).
4. Fitting the clipping blades see chapter 6.1.2.

Fig. 6



#### NOTE!

Only work with sharp clipping blades, replace blunt or defective blades without teeth. The correct resharpening of clipping blades is only to be done by special machines or by a specialist. In that case, contact your service centre.

### 6.2.2 Lubrication

A thin layer of lubricating oil between the upper and lower blades is essential for a good clipping result and to increase the service life of the clipper and the clipper blade (Fig. 7).



#### CAUTION!

Insufficient lubrication of the clipping blade leads to overheating and a reduced service life of the clipper and blade, as well as a reduction in battery life. Therefore:

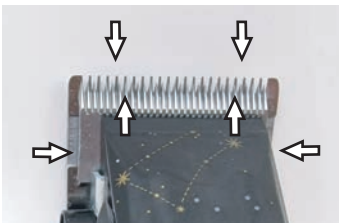
- ▶ Lubricate the blades sufficiently when clipping (at least every 15 minutes) to prevent them from becoming dry (Fig. 7).
- ▶ Only use the lubricants prescribed by the manufacturer.



#### NOTE!

Always oil the clipping blade with the special oil supplied or a kerosene oil of the ISO VG 15 specification.

The provided oil is non-toxic and produces no irritation on contact with the skin or the mucous membranes. This paraffin oil degrades to some 20% after 21 days (CEL-L-33-T-82).



The blades must be oiled before, during and after every use. When the blades of the clipper leave stripes, oil may be required. Place a few drops of oil ahead and laterally on the clipper blades (see arrows). Wipe off the excessive oil with a smooth, dry cloth. Lubrication sprays do not have sufficient oil for a good lubrication, but serve for cooling the clipping blades. Immediately change damaged or crenated blades to avoid injuries.

Fig. 7



#### CAUTION!

Remove all the leaking, used up or excessive grease from all the lubrication points, and it is to be disposed in accordance with the local regulations.

### 6.2.3 Cleaning

A thin layer of lubricating oil between the upper and lower blades is essential for a good clipping result and to increase the service life of the clipper and the clipper blade (6.2.2 Lubrication).

#### Clipping blades

Clean both clipping blades with a brush between uses.

## 7 Troubleshooting

- The here described tasks for troubleshooting can be done mostly by the operator.
- Some tasks may only be done by especially trained personal or by an authorised service centre. These tasks are marked with (S).

Malfunction	Cause	Rectification
Top blade does not move	Adjustment lever is defective	Replace adjustment lever (F)
	The top and bottom blades stick to each other	Clean and oil the blades
Machine cuts poorly or not at all	Clipper blades are blunt	Have top and bottom blades resharpened by service centre (S)
	Clipper blades have not been correctly ground as per specification	
	Clipper blades are not oiled	Oil clipper blades every 15 minutes
	Hairs jammed between top and bottom blades	Remove the clipper blades, push the upper blade halfway away from the clipper blade, remove hair between the upper and lower blades
	Clipper blades have too little cutting pressure	Have clippers overhauled (F)
Motor is not running	Battery is dead	Charge battery
	Contacts dirty	Switch off the clipper, clean the charging contacts of the clipper and power supply unit
	Faulty battery	Replace battery
	Smell of burning from the motor housing. Motor burned out.	Have motor and / or electronics replaced (S)
	Faulty motor and / or electronics	Have motor and / or electronics replaced (S)
	Clipping blade blocked	Cleaning and oiling clipping blades
Running time of a fully charged battery is too short and / or blades are getting hot	Clipper blades were not oiled sufficiently	Oil clipper blades

## 8 Spare parts

See illustration spare parts at the end of this instruction manual.



### WARNING!

Faulty spare parts may cause damages, malfunctions or total loss and may reduce security. Therefore:

- ▶ Only use original spare parts from the manufacturer. Purchase the spare parts at the official distributor or directly at the manufacturer.
- ▶ If using no original spare parts all warranty and service claims are expiring.

Pos. No.	Description	Quantity	Pos. No.	Description	Quantity
1	Housing shell top complete	1x	13	Bottom blade	1x
2	Housing shell bottom	1x	14	Hook ring	1x
3	Li-Ion battery 3.7 V / 3.2 Ah / 11.84 Wh	1x	15	Screw M2x6	2x
4	Motor complete	1x	16	Screw M5x5.5	2x
5	PCB with charging socket	1x	17	PT screw Ø 2.6x10	6x
6	Switch complete	1x	18	Countersunk screw Ø 2x8	4x
7	Adjustment lever set	1x	19	Countersunk screw Ø 2.6x10	4x
8	Blade carriage	1x	20	Power supply with plug	1x
9	Blade carriage base plate	1x	21	Plug EU	1x
10	Rocker arm	1x	22	Plug AU	1x
11	Clipping blade spring	1x	23	Plug GB	1x
12	Top blade	1x	24	Plug US	1x

## 9 Disposal



### CAUTION!

#### Environmental damages when disposing incorrectly!

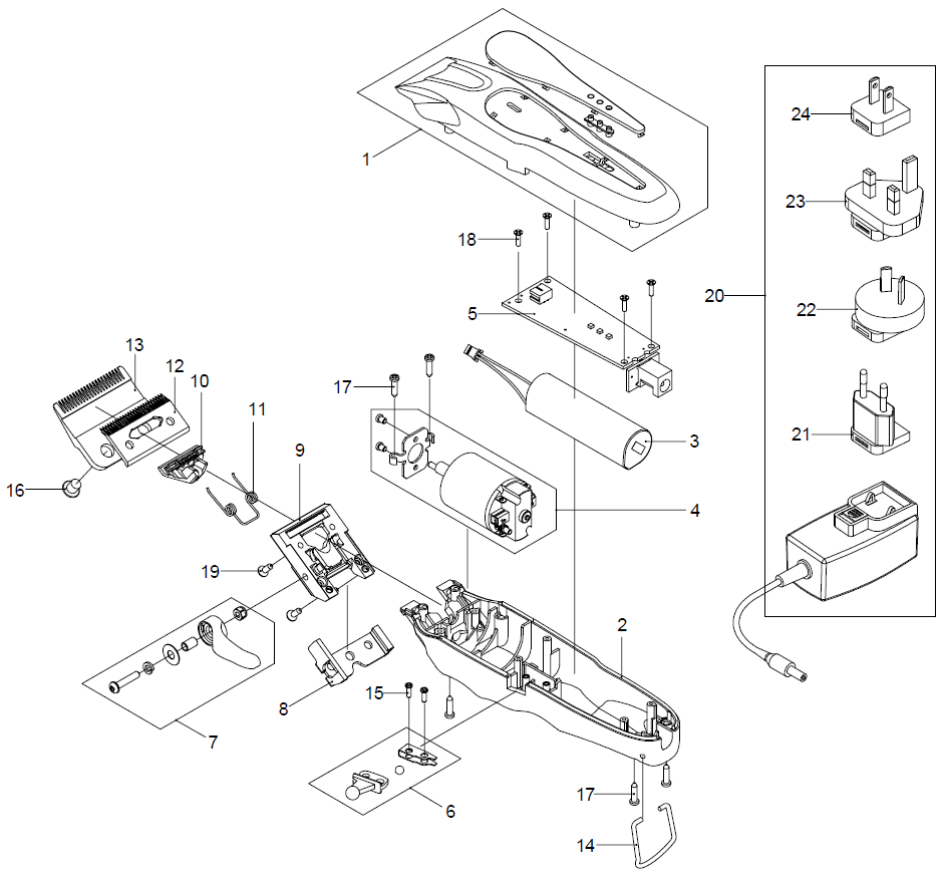
Electronic scrap, batteries, lubricants and other indirect materials are subject to hazardous waste treatment and may only be disposed of by approved specialist companies!



### NOTE!

To dispose of the clipper, take it along with the charging station to a nearby service centre or specialist shop for electronics.

Remove the battery from the device before disposing of it.



# Warranty

Item

Serial no.

Date of purchase

Stamp and signature

In case of claim, please return your machine with the instruction manual and the warranty card directly to your local distributor. Please do not cut off the warranty card from the instruction manual.

© 2024 Heiniger AG. All rights reserved.

This instruction manual may not be duplicated or distributed, neither completely nor in extracts, or by electronic or mechanical means (including photocopying), transmitted or used for the purpose of competition without authorisation from Heiniger AG.

Subject to change without notice.

Contact:

Heiniger AG

Industrieweg 8

CH - 3360 Herzogenbuchsee

Switzerland

Tel. +41 (0)62 956 92 00

marketing(at)heiniger.com

Translation of the original instructions

